

SEND Information Report

2025-2026

This information report answers some of the most frequently asked questions about the school's provision for children with special educational needs or disabilities. It is reviewed annually or when necessary, throughout the year. We are aware that this information can be daunting for parents and therefore would welcome the opportunity to discuss this with you in person, if you would prefer. We are here to provide support for you, as well as your child. If you need help accessing this document, please contact us to arrange a meeting.

What is SEN?

'A pupil has SEN (Special Educational Needs) where their learning difficulty or disability calls for special educational provision, that is provision different from or additional to that normally available to children of the same age.' (SEN Code of Practice page 82)

We are an inclusive school, aiming to support all children and their individual needs within the limitations of our school budget. The Code of Practice identifies 4 broad areas of need:

1. Communication and interaction;
2. Cognition and learning;
3. Social, emotional and mental health difficulties;
4. Sensory and/or physical needs.



How does Woodlands Park support children with special needs?

All children will benefit from high quality teaching that has been adapted to meet their needs. Where necessary they will take part in small group or individual interventions targeted to meet and support their area of need. We draw on expertise from outside agencies to inform our support programmes to ensure children make the best progress they are capable of. We also ensure children's emotional and social development is secured through strong pastoral systems within our school. Our school environment where possible is adapted to meet children's additional needs. Children with SEN are given every opportunity to take part in the wider life of the school.

How do we assess the progress of children and what will be done if my child is falling behind?

Each class teacher assesses the children continually as part of their teaching. If they feel that a child is not making expected progress, they will adapt teaching and learning to help them to learn and ensure they make progress. If they continue to make less than expected progress they will be discussed with the Special Needs Co-ordinator (SENDCo) at a pupil progress meeting as well as completing a Cause for Concern document. Additional assessments may be undertaken to identify the child's area of need and to set specific targets for their learning. If more or different support is needed, a learning plan is put in place to support the child and to help them make more progress. If necessary, the SENDCo will seek advice from other professionals to make more detailed assessments to inform the support put in place for your child.

How can I let the school know if I think my child is struggling at school?

If you have concerns about your child's progress, you should first speak to your child's class teacher. They are responsible for:

- Checking on the progress of your child and identifying, planning and delivering any additional help your child may need (this could be targeted work or additional support) and letting the SENDCO know as necessary.
- Setting specific targets/desired outcomes for your child, based on the small, achievable steps, sharing and reviewing these with parents.
- Making sure that your child is receiving the best provision to suit his or her needs.
- Ensuring that the school's SEND Policy is followed in their classroom and for all the children they teach with any SEND.

If you continue to be concerned that your child is not making progress, you may speak to the Special Needs Co-ordinator, known as the SENDCo. This is currently Mrs Helen Connett.





Mrs Connett is responsible for:

- Liaising with and supporting class teachers on the implementation of the above.
- Co-ordinating all the support for children with special educational needs or disabilities (SEND).
- Developing and reviewing the school's SEND policy/SEND information report.
- Liaising with all outside agencies that may be coming in to school to help support your child's learning, e.g., Speech and Language Therapy, Educational Psychology.
- Monitoring and quality assuring the content of children's 'Learning Plans' (individualised learning plans).
- Leading annual review meetings for all children with an Education and Health Care Plan (EHCP) and coordinating provision for these children.
- Giving regular updates to the school's Senior Leadership Team regarding the progress of all children on the SEND register.

How do I contact the people responsible for SEND or arrange to meet them?

Class teachers, the SENDCo and Head Teacher can be contacted either by:

- **Class Dojo** – This is the best way to message your teacher.
- **Phone** – 01752 690046
- **Email** – admin@woodlandspark.devon.sch.uk (Mark it for the attention of Mrs Connett)
- **Write to us** – Woodlands Park Primary School, Abbot Road, Ivybridge, Devon PL21 9TF

What further external support can Woodlands Park Primary School access and when would this happen?

Teachers work with a range of other professionals to support children with SEND. These include Plymouth MAST, Educational Psychologists, Communication Interaction Team and Speech and Language therapists. We also aim to work in partnership with our colleagues in the health service including the school nurse, the Mental Health Support Team (MHST), CAMHS and the Child Development Centre.

Where can I find information about the Local Authority's Local offer for children and young people with SEND and their families?

The Local Authority's Local Offer can be found at [Devon's SEND Local Offer - help and support for children with SEND](#).



This contains a directory of services available to parents and children and provides information regarding SEND support in Devon. Page 4 of 4 For any other information about our school and the opportunities we offer please refer to our website www.woodlandspark.devon.sch.uk or contact the school office on Tel: 01752 690046.

How does Woodlands Park Primary School involve parents and children in their SEND support?

At Woodlands Park, we operate an open-door policy and value our strong relationships with parents and carers. We recognise the importance of working together to secure the best possible outcomes for all children. We also have regular parents' meetings with class teachers, where parents can share and review targets, progress and support arrangements. Children are actively encouraged to understand their targets and celebrate their success in achieving them.

How are children at Woodlands Park Primary School supported to share their views?

Engaging all children as active participants in their own education and in making a positive contribution to their school and local community is a priority for us here at Woodlands Park Primary School. Where children have SEND, we will take extra care to involve them and make sure their voice is heard.



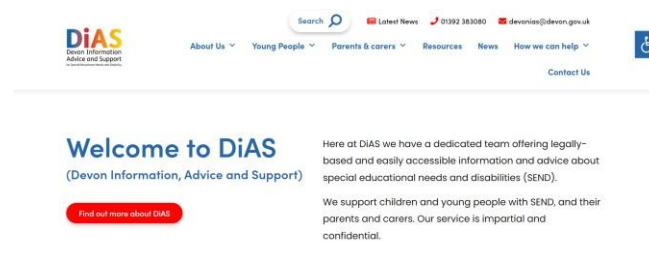
Whenever possible, we include children with SEND in planning how best to support them and in reviewing their progress. All children with SEND will have specific goals and outcomes and they will be part of the discussion to agree and review these.

If I am not happy with the provision at Woodlands Park Primary School, how can I share my concerns or make a complaint?

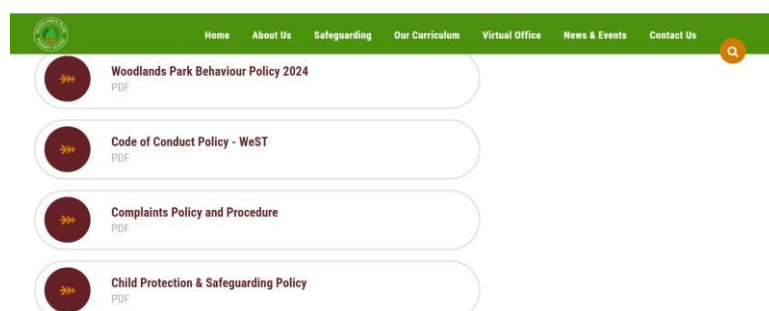
We very much hope that you will be happy with the provision for SEN at Woodlands Park Primary. However, if you are not, there are several ways to resolve this:

1. Talk to the Class Teacher.
2. Talk to the SENDCo.
3. Talk to the Head Teacher.

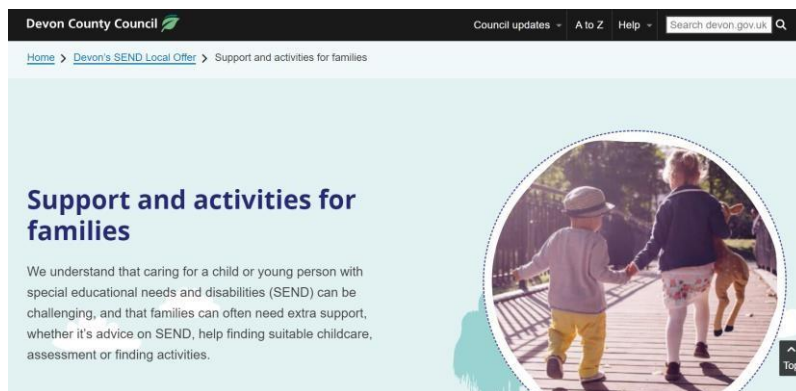
Additionally, Devon Parent Partnership (DPP) offers impartial advice and support to Parents. [Home - Devon Information Advice and Support \(devonias.org.uk\)](https://www.devonias.org.uk).



If you feel you need to make a complaint, our complaints procedure can be found on the schools' website. [Woodlands Park Primary School - Policies](#).



If you are still dissatisfied with the response, contact the local authority, Devon County Council under the SEN department. [Support and activities for families of children with SEND \(devon.gov.uk\)](https://www.devon.gov.uk/support-and-activities-for-families-of-children-with-sen)



How accessible is the school for my child with SEN?

The school's accessibility plan can be found on the school website here:

[Woodlands Park Primary School - Policies](#)

Hemingway
Editor

Readability ⓘ
Grade 9